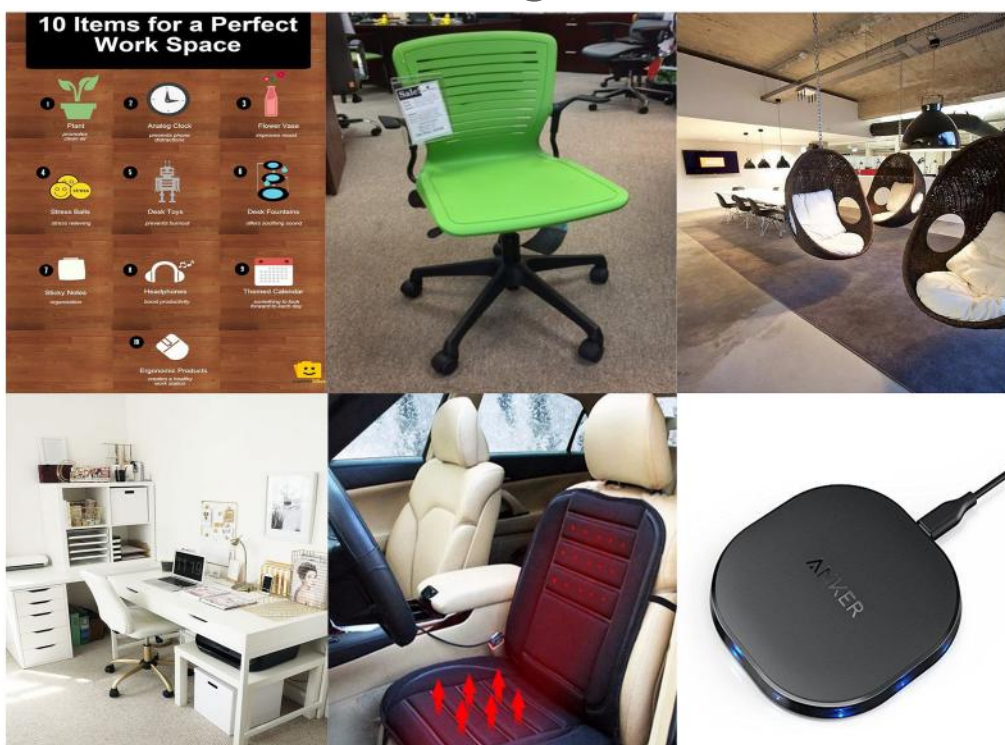


Brief

Designing advanced and integrated technologies, enabling us to interact more somatically with our environment and each other, in the workplace.

Research Findings

Images



Interviews

Q. What are the main problems you face on a daily basis?

A. Noise, no privacy, clutter, lack of resources, no heating.

Q. What would you change in the workspace?

A. More privacy, more resources, better lighting and ventilation.

Q. How long are you seated at your desk on an average day?

A. Anything between 5 to 8 hours.

Embedded Tech.


Inductive Charging

One type of technology I am interested in embedding into my project is inductive charging. Inductive charging has been mainly used to charge phones by placing them on a charging dock pad. I would like to use this technology on a larger scale to charge other utilities in the office.

Heated Seating

Another form of technology I would like to embed into my workspace is heated seating. From my interviews, a big issue was the temperature in the workspace. In winter its too cold and close to summer time its too hot. Heated seats have been used mainly in cars but I feel they would fit perfectly into my project.

User Persona

Profile Picture 	Bio: Matthew is a college student currently studying design. He loves socialising and going out with his friends but is very passionate about his college work. He hopes to get a job in design after college.
Info Name: Matthew Ashe D.O.B: 23/6/96 Address: Cork, Ireland Occupation: Student	Goals <ul style="list-style-type: none"> - Get more college work done - Be more productive - Pass exams - Graduate - Have a career in design
	Frustrations: <ul style="list-style-type: none"> - Too much noise in workspace - Lack of space - No privacy - Lack of resources - Exam stress

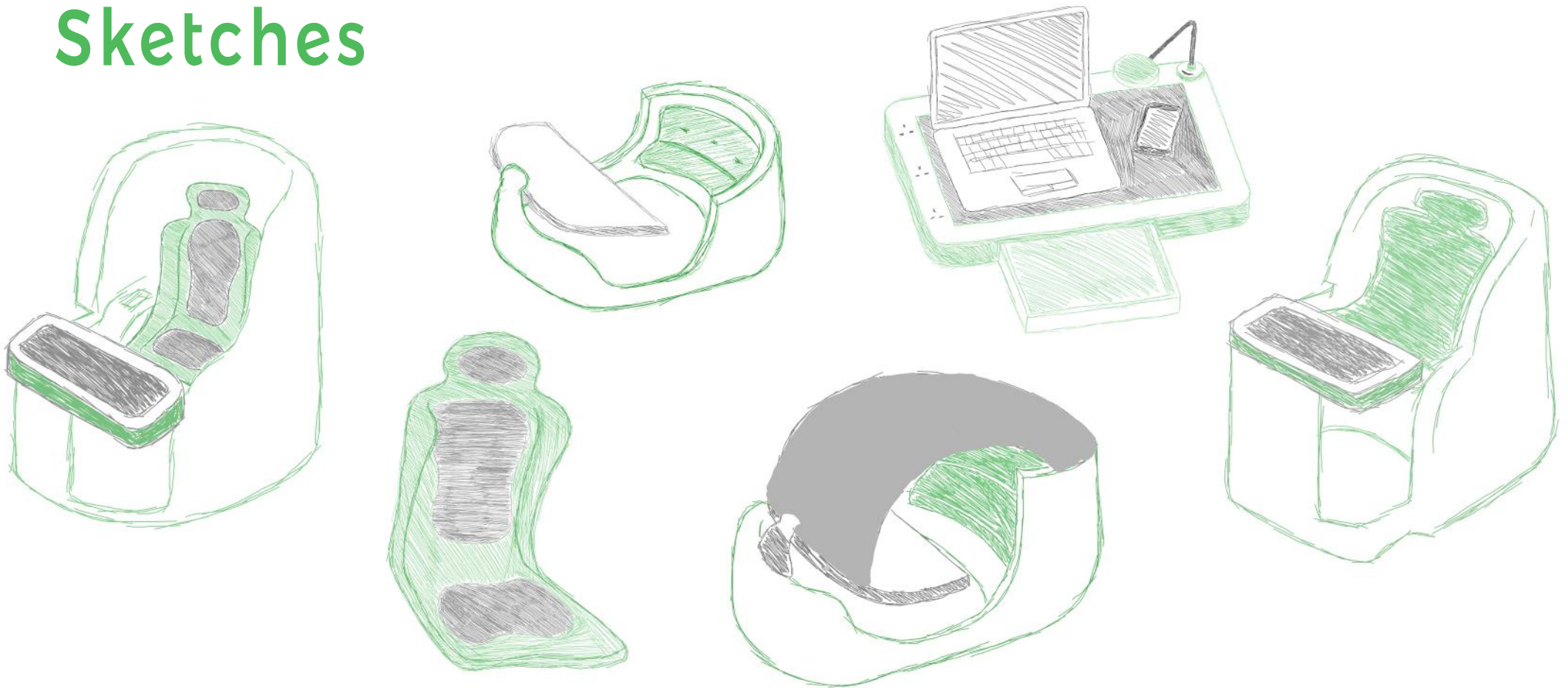
Insights

- Socialising
- Work
- Productive
- Noise
- Privacy
- Resources

Ideas & Brainstorming



Sketches

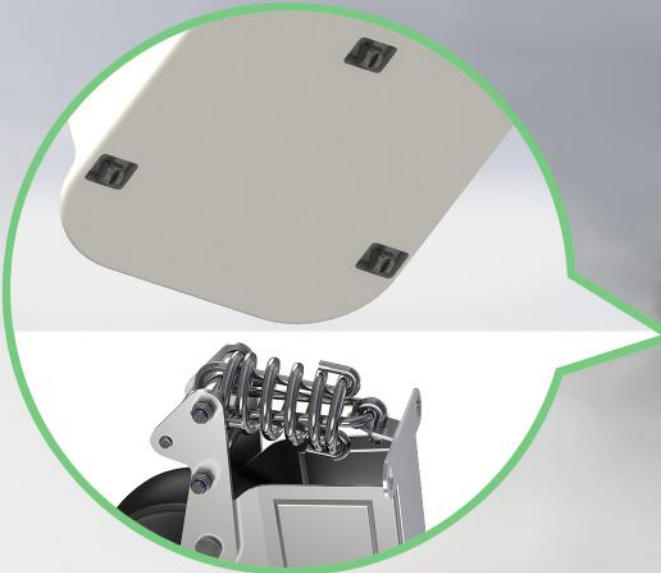


Concept Idea

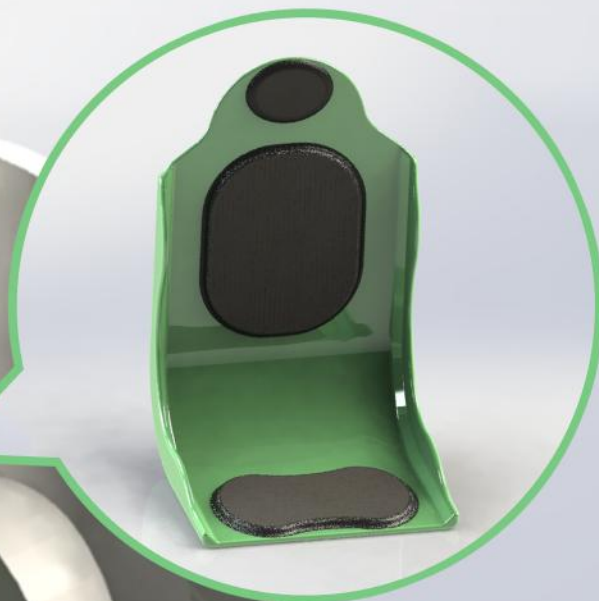
Inductive Charging Desk



Spring Loaded Wheels



Heating/Cooling Seating



Rotatable/Movable Desk





The key features of Workdesk that make it beneficial for any user is its inductive charging desk. Whenever a device is placed on the desk it will begin to charge. The other key feature of Workdesk is its temperature controlled seat. The user of Workdesk can set the temperature of which they desire to the seat.



A. More pri



m

IT Sligo
An Institiúid Teicneolaíochta, Sligeach

orangebox



Michael McGillicuddy- S00154340